



ΕΛΛΗΝΙΚΗ ΔΗΜΟΚΡΑΤΙΑ
ΠΑΝΕΠΙΣΤΗΜΙΟ ΚΡΗΤΗΣ

Εισαγωγή στα Δίκτυα Υπηρεσιών

Διάλεξη 4η: Assisting Lecture 1- SNAPT

Μύρων Παπαδάκης

Τμήμα Επιστήμης Υπολογιστών



Introduction to Service Networks

CS-592 – Spring 2015

Assisting Lecture 3

SNAPT (Service Network Analysis & Prediction Tool)

Myron Papadakis (myrpap@gmail.com)



Introduction to SNAPT

- SNAPT
 - A tool that models and analyzes Service Networks
 - Facilitates the creation of Abstract Business Processes based on Service Networks
- Service Networks (Systems)
 - Model Services that are offered and consumed by Business Entities
 - Everything is a service or a Service Provider!
 - High level of abstraction
 - **Target Group: Business Analysts, System Analysts and Designers**



SNAPT Meta-model



- Service Network
 - a set of **business entities** and **services** depicted as a graph:
 - **nodes** corresponding to the participating **business entities**
 - **edges** corresponding to **services**.
 - **services** refer to both goods and services, *tangible* and *intangible* in nature, and denote what is exchanged in the context of service network model
- An **arc** implies an **economic exchange**:
 - the origin point is the business entity which offers the service
 - the end point refers to the business entity that consumes the offered service



SNAPT > Business Entity



- **Business entity** : any independent economic entity that provides and/or consumes services in a service network., cooperating with a lots of independent business entities
- Only those services that contribute to the final service offering are modeled for each business entity.
- Business entities generate **value** from their participation in the network, so they have **costs** and **revenues** that derive from the services they offer or consume in the network.
- Each business entity is assigned with one **role** in a particular service network (depends purely to what services it offers)
 - e.g “Ford” is a Business Entity with the role of being “car manufacturer”.



SNAPT > Business Entity > Types (1/2)



- **End-customers**
 - business entities that do not offer any service, just consume them
 - they are not a business partner and they do not contribute to the service composition.
 - they offer a service by providing feedback on their experiences
- **Enablers**
 - special type of business entities that offer services that *enable the delivery of other services*.
 - Example: FedEx, intermediate payment services like Paypal or Google Checkout can be considered as “enablers” in a service network model



SNAPT > Business Entity > Types (2/2)



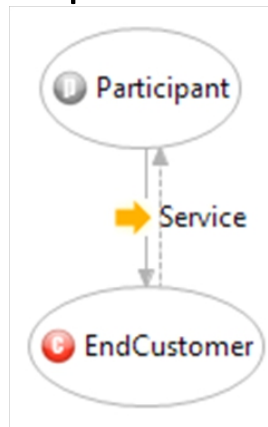
- **Service Sub-networks**
 - business entities that have an *internal structure of their own*
 - nestle an entire service network that provides and/or consumes services.
 - restriction: each service offered or consumed by a service sub-Network must also be offered or consumed by a single Business Entity inside the Sub-Network.
 - can be used to analyze the internal structure of an organization.
- **Participant**
 - an ad-hoc business entity in the network, which is not service sub-network, end-customer or enabler



SNAPT > Visualize Service Networks (1/2)



- **A service always connects two business entities** indicating that a business entity offers a service to another business entity which consumes it
- Services connect business entities with 1-to-1 relationships:
 - **service offer**: represented with a **solid-line arc**
 - **service consumption**: depicted as a **dashed-line arc**



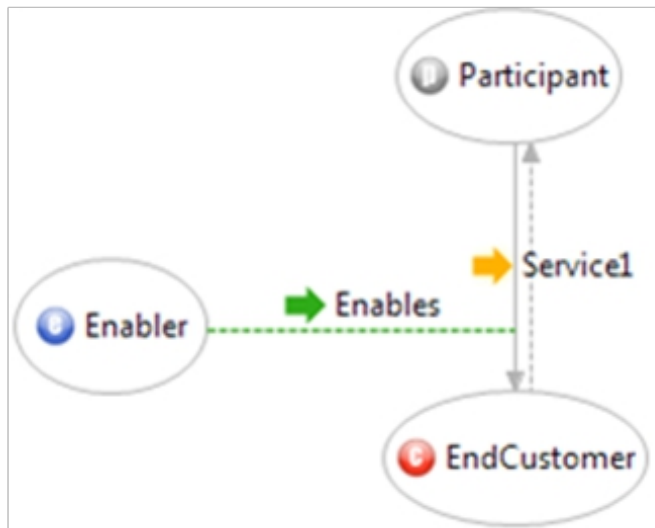
Participant offers a Single service to the EndCustomer



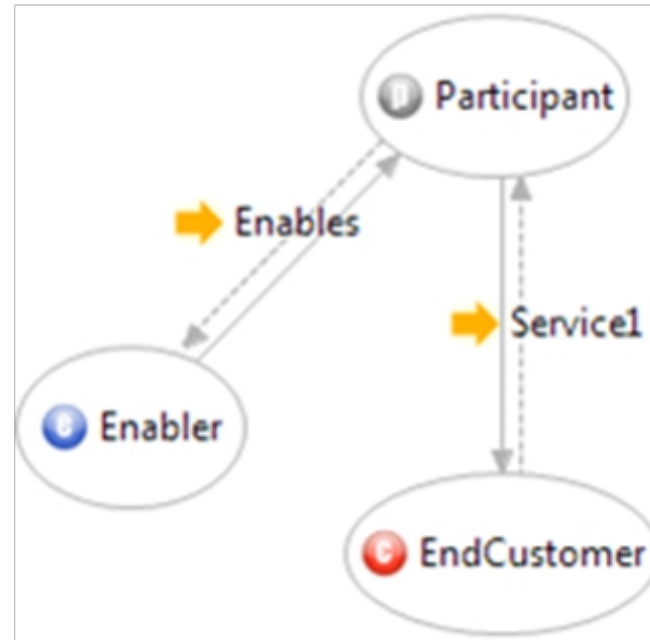
SNAPT > Visualize Service Networks (2/2)



- **Enablement:** connects an enabler with another business entity or directly with the service it enables during the visualization process.



OR



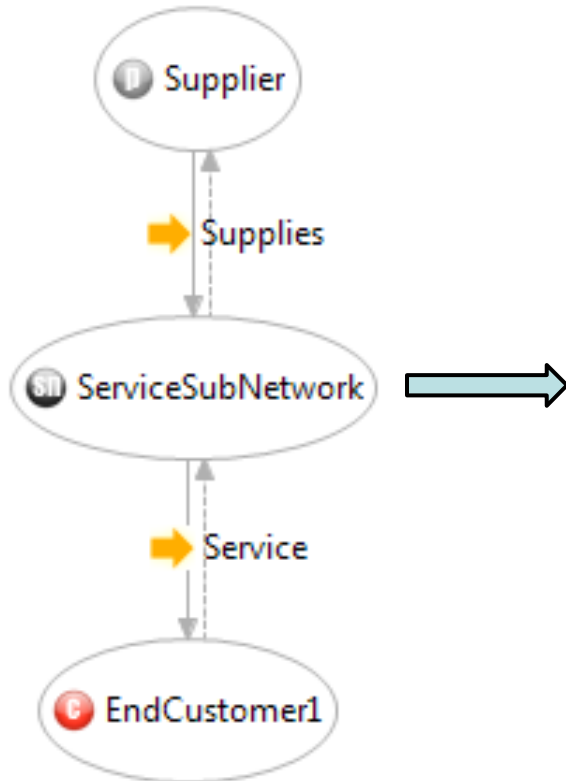
Enablement Service: an Enabler enables the delivery of the Service 1



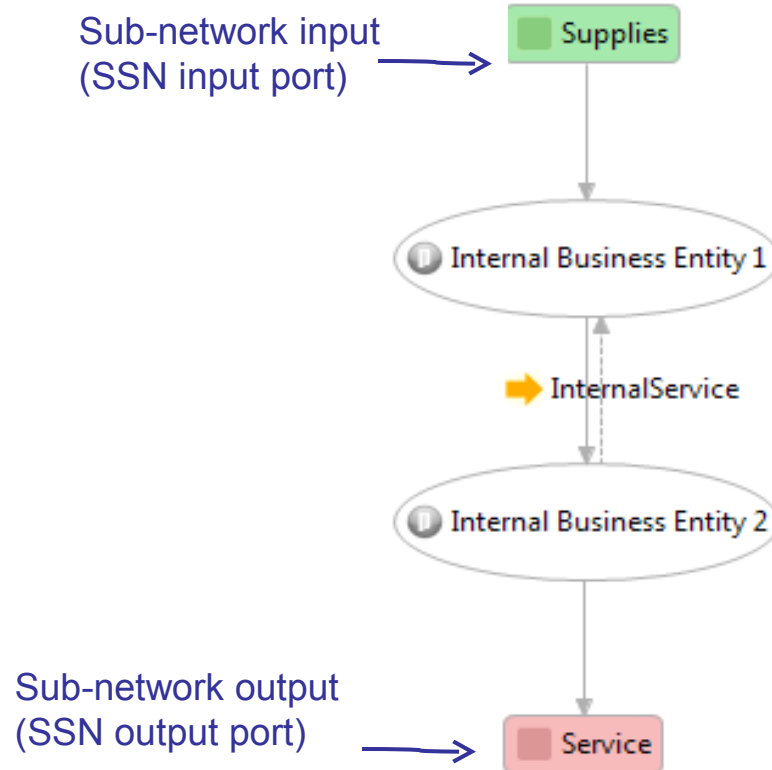
Snapshots: Service Sub-Networks



Service Network



ServiceSubNetwork



Service “Supplies” consumed by ServiceSubNetwork in the SN (left), is mapped to an input port in the ServiceSubNetwork (right).

“Service” offered by ServiceSubNetwork in the Service Network (left), is mapped to an output port in the ServiceSubNetwork (right).



SNAPT > Costs and Revenues



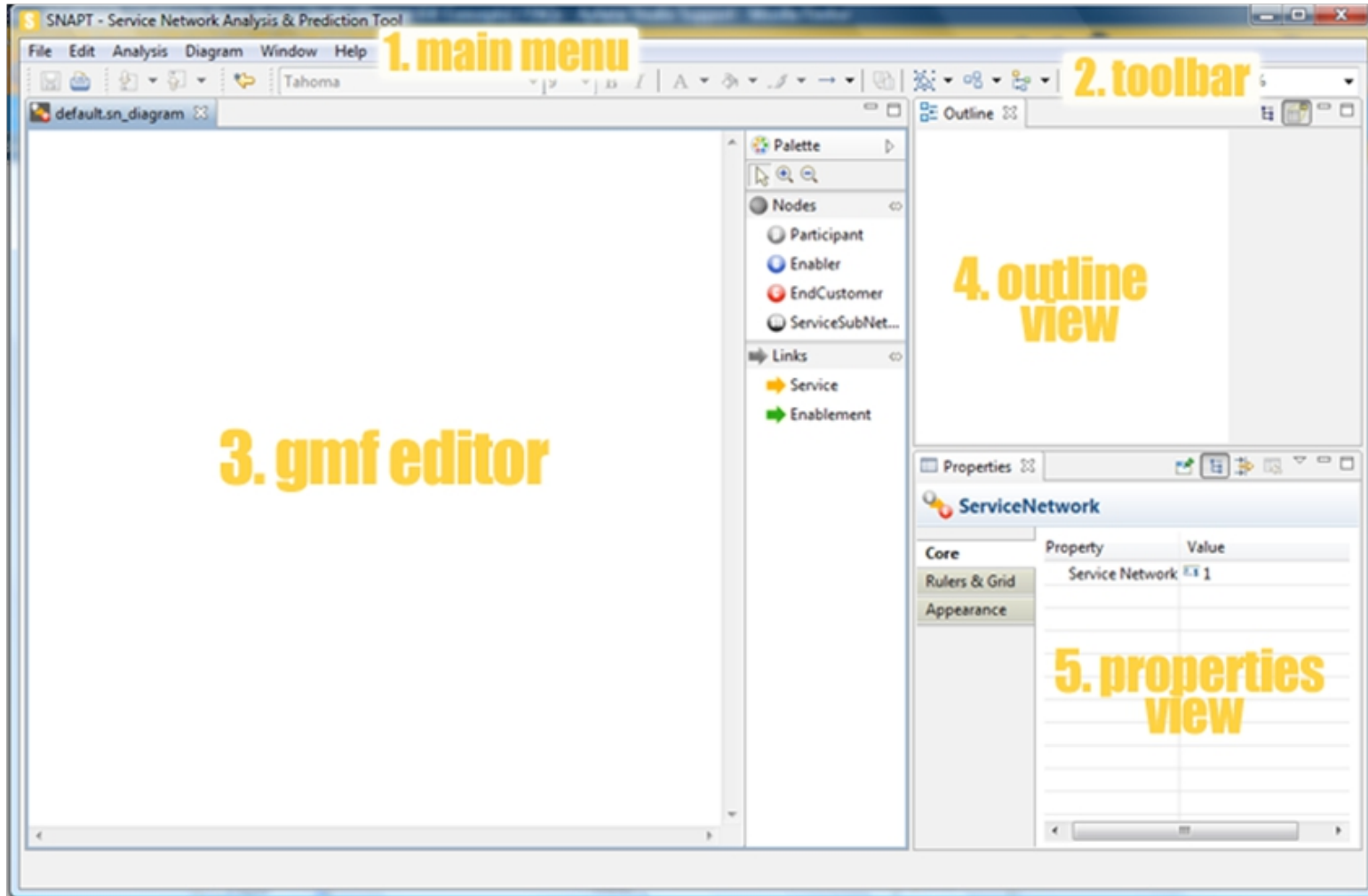
- **Services** are associated with **costs** and **revenues**.
 - Each service delivery generates revenues.
 - **Service revenues are costs for the service consumer and revenues for the service provider**
 - A “service offer” indicates that target service’s revenues should be added to the source business entity’s total revenues.
 - Services can be intangible in nature (advice, knowledge); in this case, the revenues are assumed to be equal to zero.
- The profit of any Business Entity is calculated as follows:

$$\mathbf{Profit = \Sigma(IncomingServiceRevenue) - \Sigma(OutgoingServiceCost),}$$

where *IncomingServiceRevenue* and *OutgoingServiceRevenue* refer to the revenues deriving from the business entity’s consumed and offered services respectively.



SNAPT > Start of the Program





SNAPT > Snapshot: Assign KPOs



- SNAPT provides a KPI Library based on the APQC Process Classification Frameworks
 - Fully compatible with IBM Websphere Business Modeler
- SNAPT updates its internal KPI library from the KPIs Repository
 - REST-based interface
- SNAPT user can select from the library the desired KPO to assign to a service
- A KPO describes the targeted value, i.e. a target performance value, and a KPI indicates the actual measured value

Add Key Performance Objective

Key Performance Indicator
You need to select a Key Performance indicator from the following list

type filter text

- Category 2.0 Develop and Manage Products and Services
- Category 3.0 Market and Sell Products and Services
- Category 4.1 Supply Chain Planning
 - Subcategory 4.1.1 Develop Production and Materials Strategy
 - Subcategory 4.1.2 Manage Demand for Products and Services
 - KPI Total annual cost of quality per <1,000> revenue
 - KPI Number of FTEs for the supply chain planning functi
 - KPI Annual total inventory turn rate
 - KPI Forecast accuracy one planning period prior to prod
 - KPI Production schedule attainment rate for a planning p
 - KPI Cash to Cash cycle time
- Category 4.2 Procure Materials and Services

KPI Description:

Key Performance Objective

Value (Num)
 Duration
 Unspecified

0,06



SNAPT > Sequencing of Services (1/4)



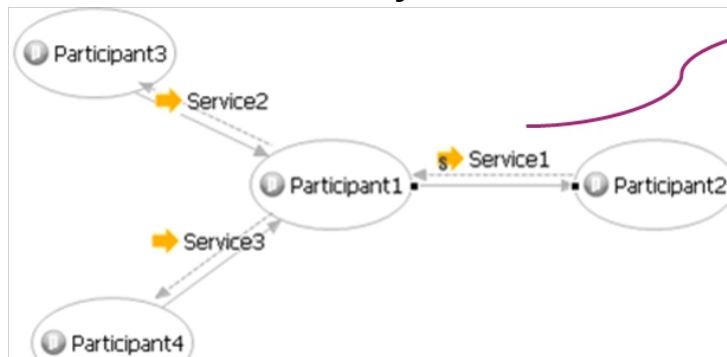
- It is mandatory to properly annotate services in the service network models to **define the order of services** in a service network model
- Sequencing information of each service S is created relatively to the set of services that are offered to the source business Entity of service S
- **Gateways are used to express sequencing**, which can be nested in any order
 - **Sequential Block**: this gateway implies that any of its children elements is delivered in series, one after the other
 - **AND Block**: this gateway specifies that its elements should be delivered in parallel
 - **XOR Block**: denotes that exclusively one of the elements in the block must be delivered.
- Any sequencing service (a service with sequencing information attached) is decomposed to several services that will be delivered in the order defined by gateways



SNAPT > Sequencing of Services (2/4) > Simple Sequential Block Example



- **Example of Sequential Block:** *In order for Service1 to be delivered to Participant2, both Service2 and Service3 must first be delivered to Participant1 in order.*



Annotation indicating Sequencing Services

Service Service1

Manage selected Service's Sequencing Information

- SEQ Sequential Block
 - Sequence 1
 - Sequence 2

Add Sequencing Information Remove Sequencing Information

Property	Value
Order	1
Service	Service Service2

Service Service1

Manage selected Service's Sequencing Information

- SEQ Sequential Block
 - Sequence 1
 - Sequence 2

Add Sequencing Information Remove Sequencing Information

Property	Value
Order	2
Service	Service Service3

Sequence Order

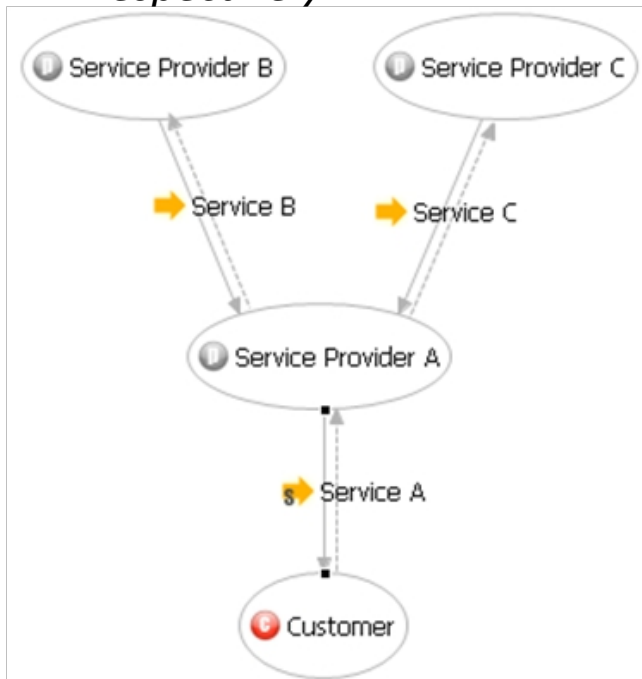
ing 2015 - Myro



SNAPT > Sequencing of Services (3/4) > AND Sequential Block Example



- In order for the service provider A to deliver service A, he must consume in **parallel**, both service B and service C offered by service provider B and service provider C, respectively.*



Service Service A

Manage selected Service's Sequencing Information

- AND AND Block
 - SEQ Sequential Block
 - Sequence 1
 - SEQ Sequential Block
 - Sequence 1

Property	Value
Order	1
Service	Service Service B

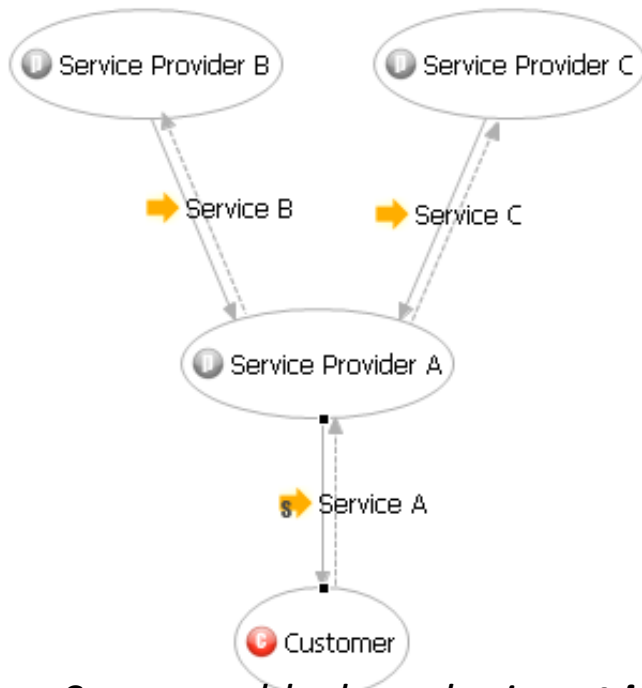
*The number indicating the order in which the Sequence blocks are executed is **not important** in this case, as all blocks contained in AND blocks are executed in parallel.*



SNAPT > Sequencing of Services (4/4) > XOR Sequential Block Example



- In order for the service provider A to deliver service A, he must consume **either** service B **or** service C offered by service providers B and C respectively.



Service Service A

Manage selected Service's Sequencing Information

- XOR XOR Block
 - SEQ Sequential Block
 - Sequence 1
 - SEQ Sequential Block
 - Sequence 1

Property	Value
Order	1
Service	Service Service B

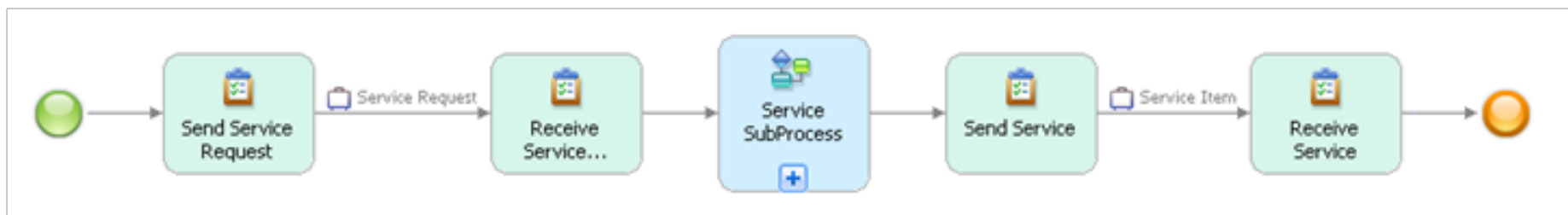
Sequence blocks order is **not important** in this case, as exclusively only one of the blocks contained in blocks is executed



From Service Networks to draft Business Process Models > IBM WBI Modeler



- **For each service** with no sequencing information defined for it, a **generic process flow** is created containing the following:
 - two **business items** named “Service request” and Service Item”, which correspond to the data flows;
 - a **sub-process** corresponding to the Service assigned to the source business entity organization unit;
 - **two tasks** assigned to the organization unit of the target business entity **that starts and ends the process**;
 - **two additional tasks** for the source business entity for receiving the request, process the Service and send the response back

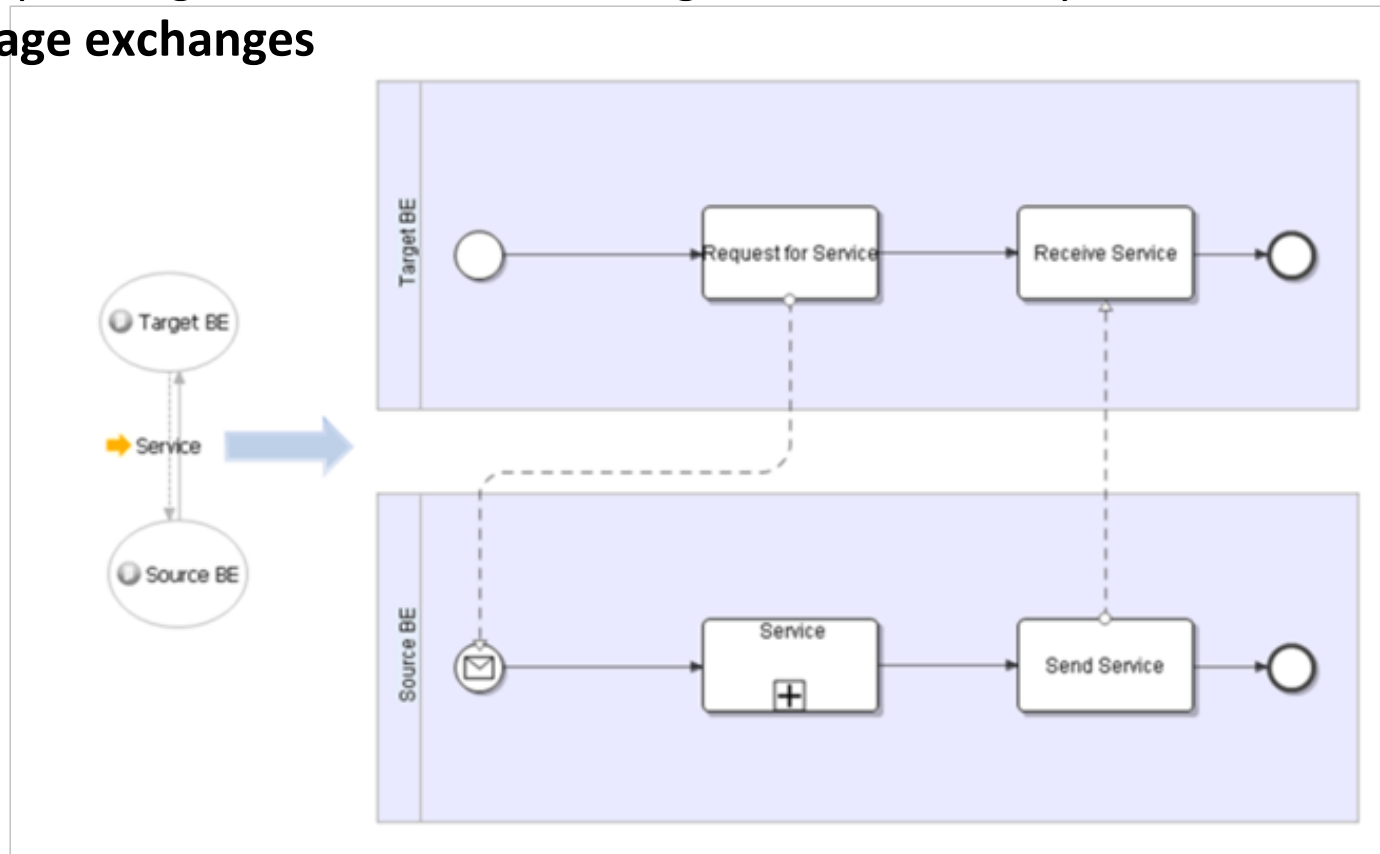




SNAPT > From SNAPT to Eclipse BPMN Editor

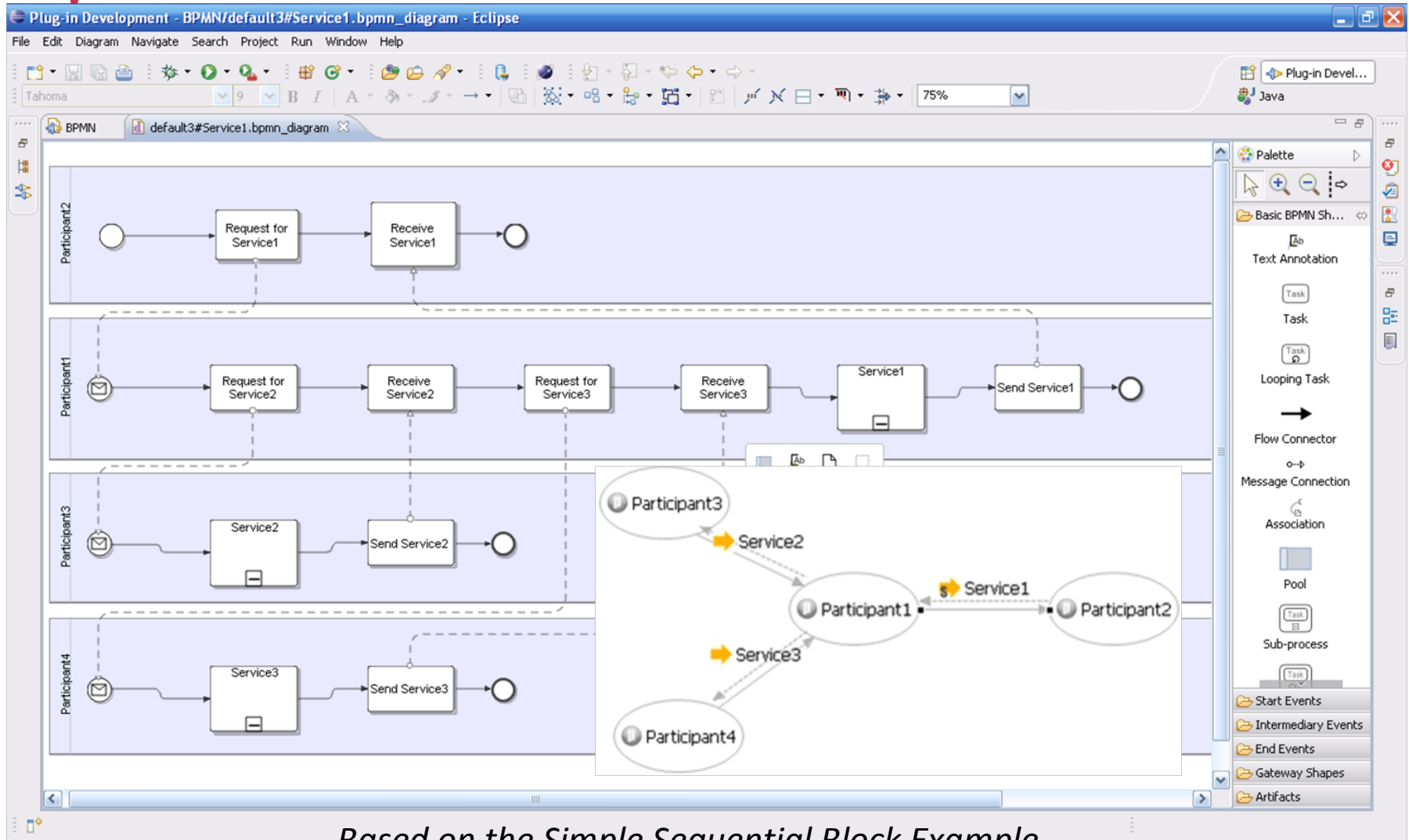


For each service with no sequencing information defined for it, a new BPMN diagram is created depicting a generic workflow consisting of the two **pools**, corresponding to the source and target business entity, connected with **message exchanges**





SNAPT > From SNAPT to Eclipse BPMN Editor > Example



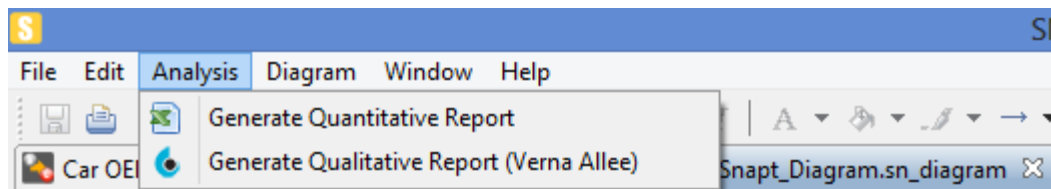
Based on the Simple Sequential Block Example



SNAPT > Generating Profitability Sheets



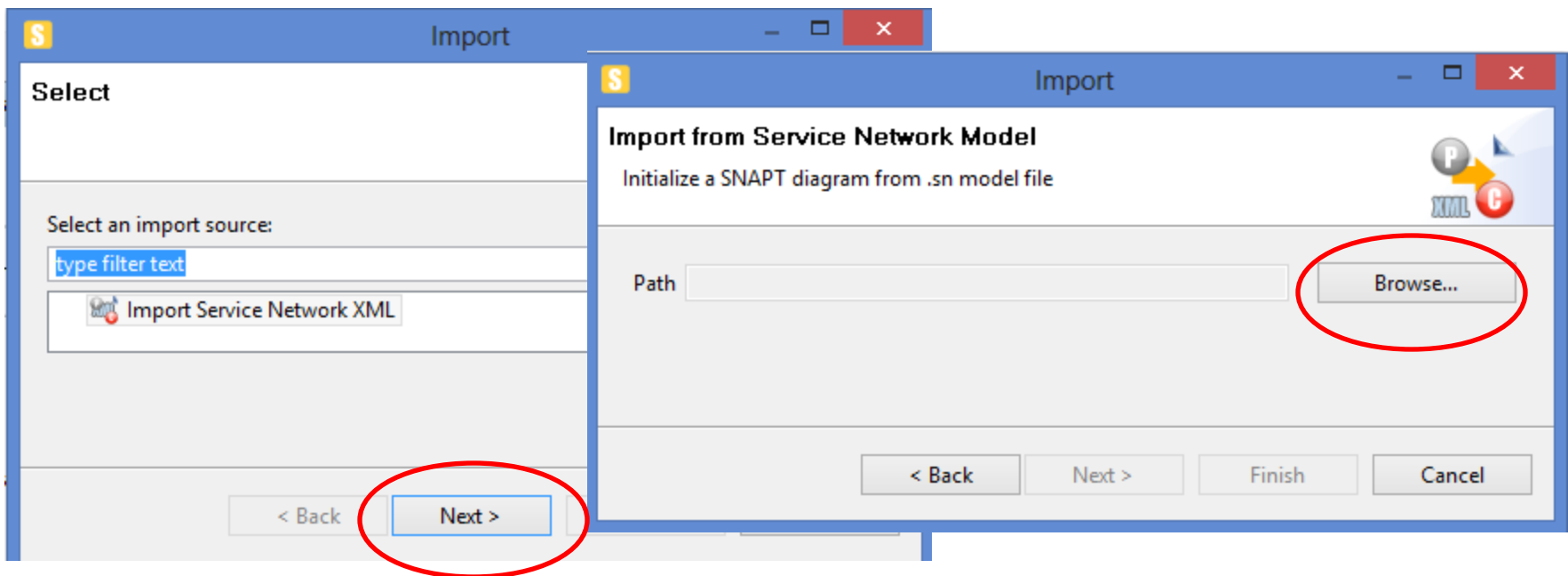
- SNAPT allows the generation of profitability sheets from a service network model (**Excel worksheets**).
- These worksheets provide an overview of the **cost-revenue** calculations within the service network.
 - Separate excel sheets are generated to display each business entity's costs and revenues;
 - an additional (first) sheet is also used to summarize the costs / revenues for the entire network.
- Of course we have to assign the corresponding costs/revenues to the services (see Slide: “SNAPT > Assigning Costs”)
- Select “**Analysis**→**Generate Quantitative Report**” from the Main Menu.





SNAPT > Import

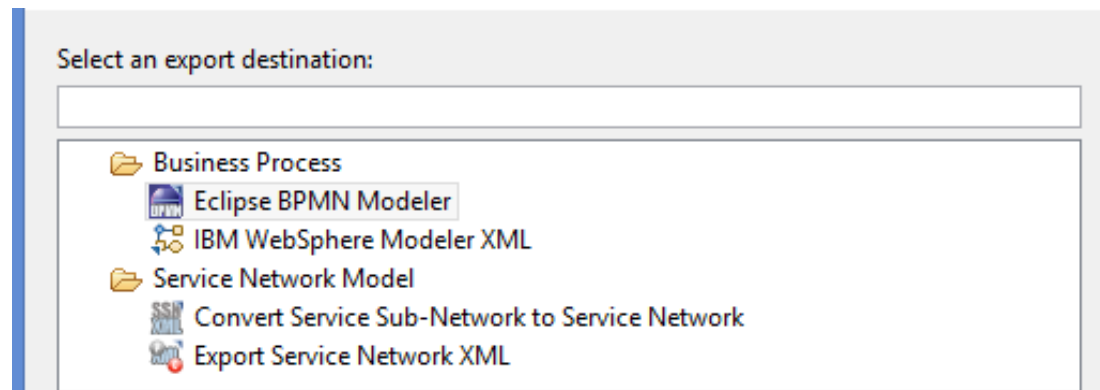
- Wizard for importing service network semantic model files (XML file) and automatically initializes a diagram to represent them on the canvas.
- To import a service network xml file, select **“File”** → **“Import”** from the Main Menu.





SNAPT > Export

- Two options regarding whether we deal with **business processes** or **service networks**.
 - **Service network models**
 - a) export a service network model into an XML format
 - b) convert a service sub-network into a service network.
 - **Business processes**
 - a) business process models compatible with the *Eclipse BPMN Modeler*
 - b) business process models compatible with *IBM WebSphere Modeler* (XML format)





Amazon Example



- Model a simplified Amazon's service network that delivers the final service of selling books to the end customers.
- **Amazon** cooperates with a **storehouse** to provide it with books
- Amazon is a cooperation with many departments dealing with customer orders, accounting etc.
- Amazon's **own store department is responsible for processing and packaging a customer's order**
- Assume that the **Accounting department** inspects the packages, prints the invoice and finally **deals with FedEx** to ship the order.



Preliminaries



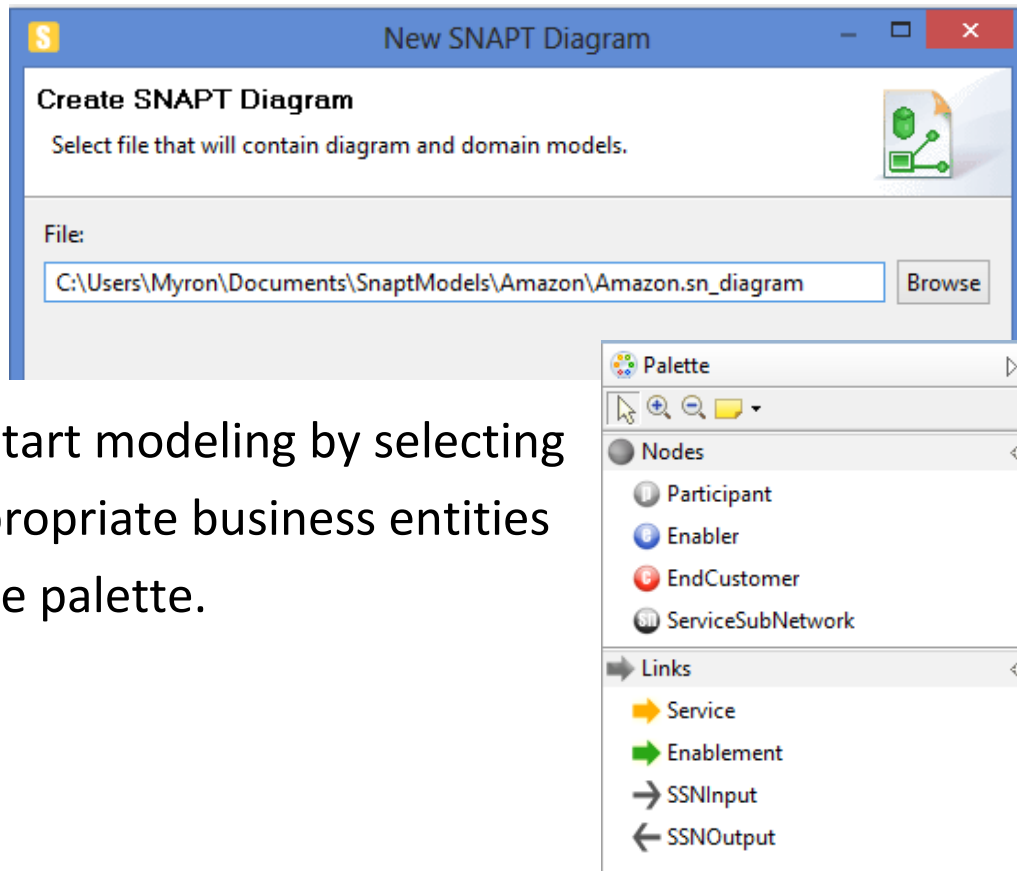
- Think which business entities your service network will include:
 - Can you identify the participants, enablers, and the end customer?
 - Are there any sub-networks?
- Note that we are mostly interested in Amazon's service network



SNAPT > Create a new diagram



- Firstly, create a new snapt diagram, i.e “Amazon.sn_diagram”



- Then start modeling by selecting the appropriate business entities from the palette.



SNAPT > Create a service Sub-Network

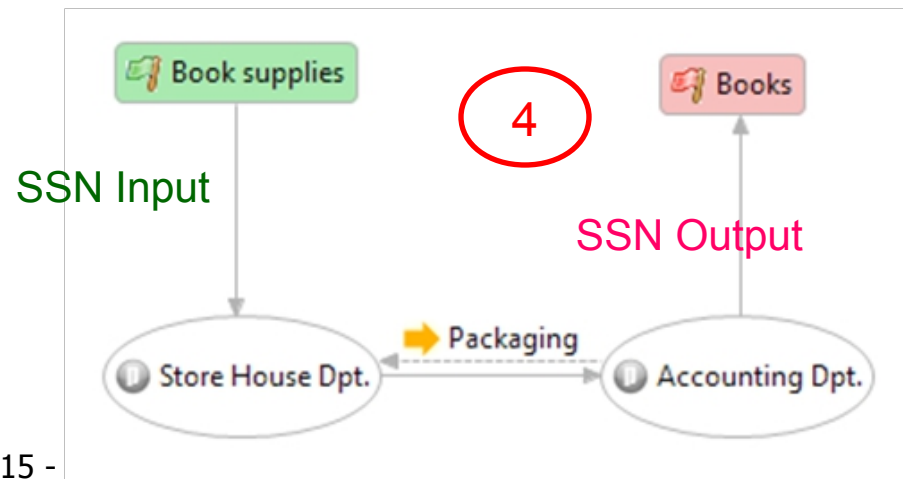
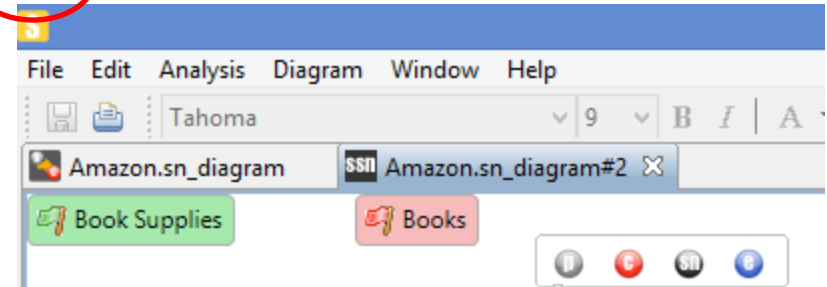


- Note that Amazon is a Service Sub-Network (you must have 2 diagrams)

Double click the service sub-network and then model it



3 A new diagram is created

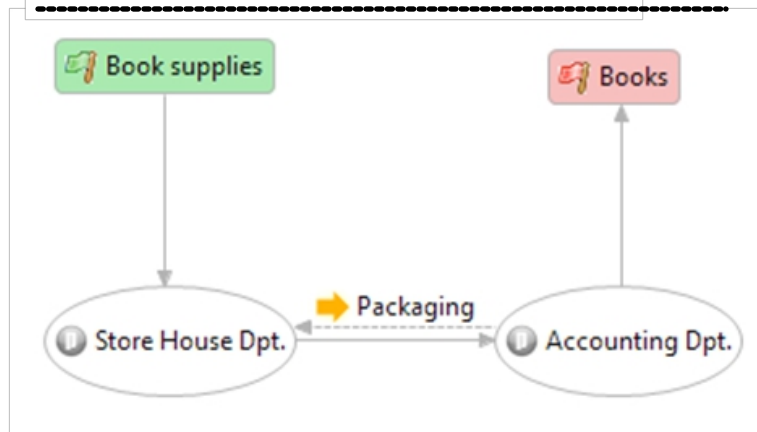
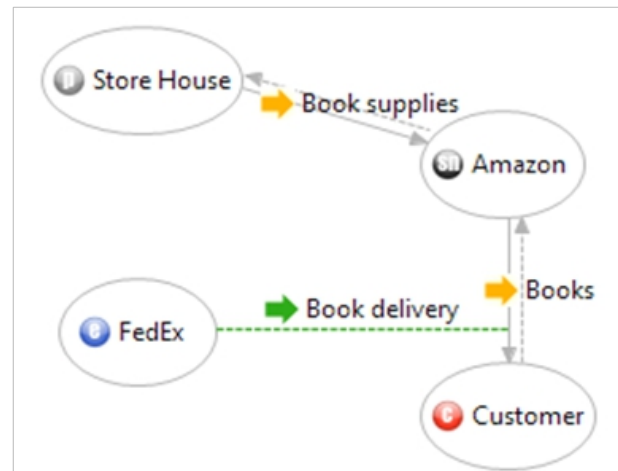




Export > Converting a Service Sub-network to a Service Network



- Export a service sub-network as a standalone service network
- Select “**File**→**Export** → **Convert Service Sub-network to Service Network**”





SNAPT > Assigning Costs

- Assume that the Store House charges 15 € for its service and Fedex charges 3€ for the delivery service. Hence, Amazon's cost is 18 €
- Amazon sells the book for 23 €
- Consequently the total profit of Amazon is $23 - (15+3) = 5$ €
- Some snapshots shown below...

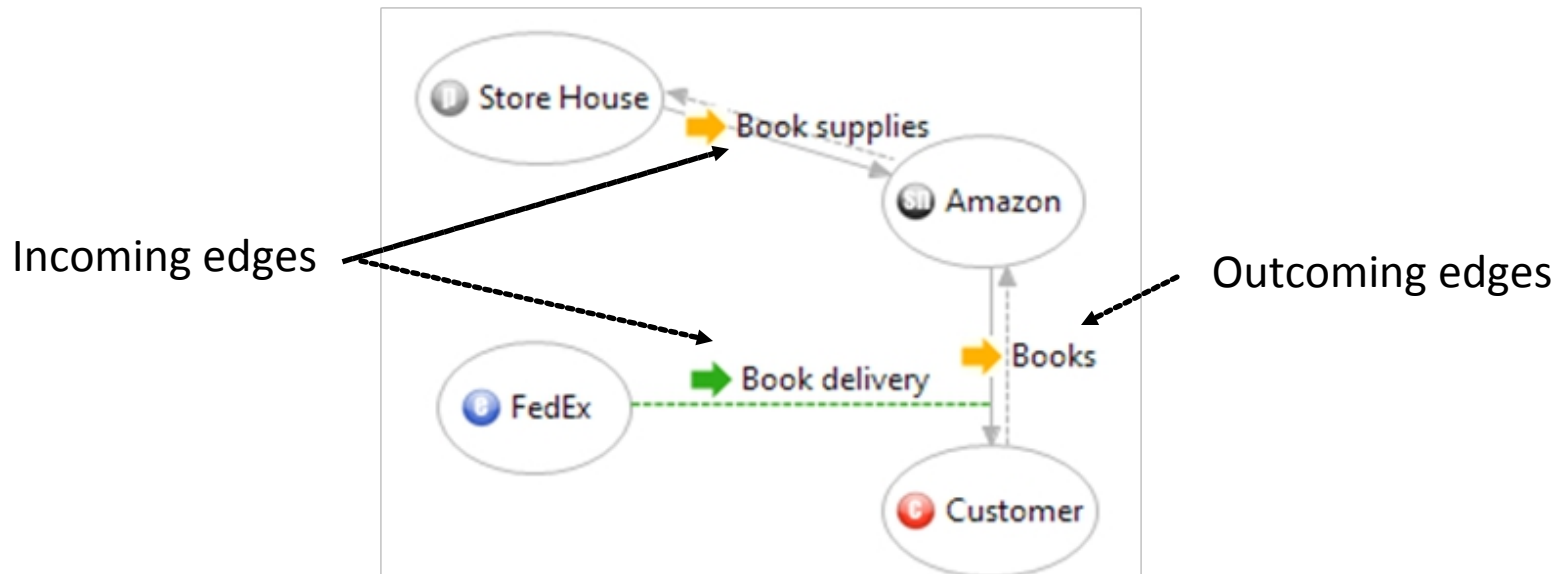
Properties			Key Performance Objectives		
Enabler					
Core	Property	Value			
Appearance	Enabler Id	1			
	Name	Fedex			
	Role				
	Total Cost	0.0			
	Total Revenue	3.0			

Properties			Key Performance Objectives		
Participant					
Core	Property	Value			
Appearance	Participant Id	1			
	Name	Store House			
	Role				
	Total Cost	0.0			
	Total Revenue	15.0			

Properties			Key Performance Objectives		
ServiceSubNetwork					
Core	Property	Value			
Appearance	Service Network	2			
	Name	Amazo			
	Role				
	Total Cost	18.0			
	Total Revenue	25.0			

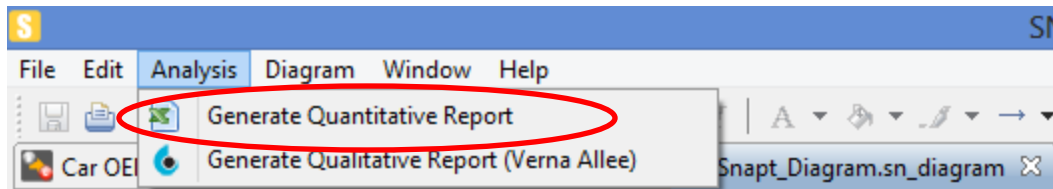


SNAPT > Generate a quantitative report



$$Profit = \Sigma(IncomingServiceRevenue) - \Sigma(OutgoingServiceCost)$$

Now export generate a quantitative report (an excel file will be created) and check it





Example 2 > Description



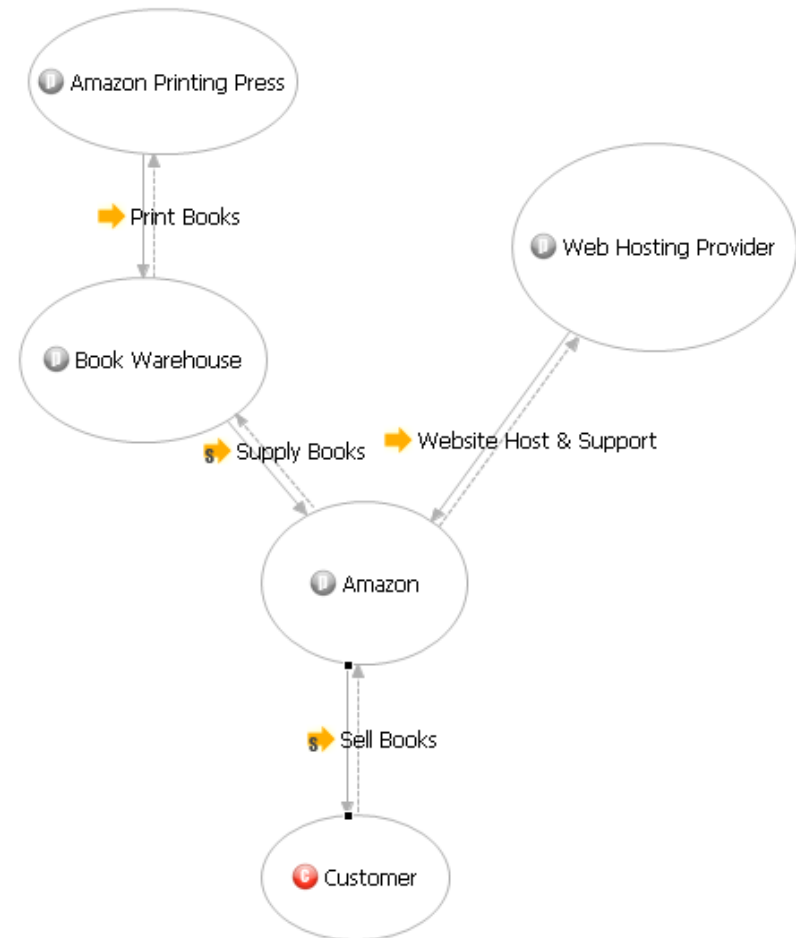
- Amazon Printing Press prints the books and provides them to a Book Warehouse
- The Book Warehouse supplies the books to the Amazon
- A Web Hosting Provider hosts the Amazon website and supports it
- Amazon sells the books to the end customer
- Objectives
 - Create the service network
 - Add sequencing information
 - Export to IBM WBI Modeler



Example 2 > Modeling



- Create a new SNAPT project
- The Book Warehouse must consume the *Print Books* service offered by the Amazon Printing Press in order to provide the *Supply Books* service.
- Amazon needs to consume both
 - the *Supply Books* service offered by the Book Warehouse and
 - the *Website Host & Support* service offered by the Web Hosting Provider





Example 2: Adding Sequencing Information (1/2)



- In order for the supply books service to be provided to the Amazon, the books must be printed from the Amazon Printing Press

The screenshot shows a software window titled "Sequencing Information" for the "Service Supply Books". It displays a tree view with "Sequential Block" and "Sequence 1". Below, a "Properties" table is visible:

Property	Value
Order	1
Service	Service Print Books





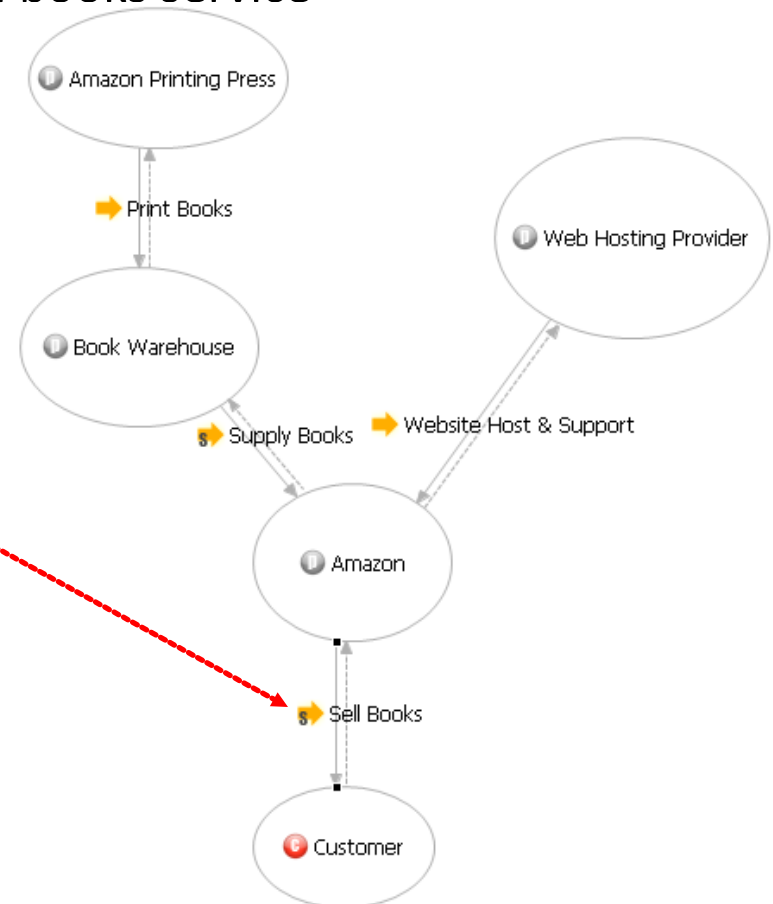
Example 2: Adding Sequencing Information (2/2)



- Adding sequencing information to the sell books service

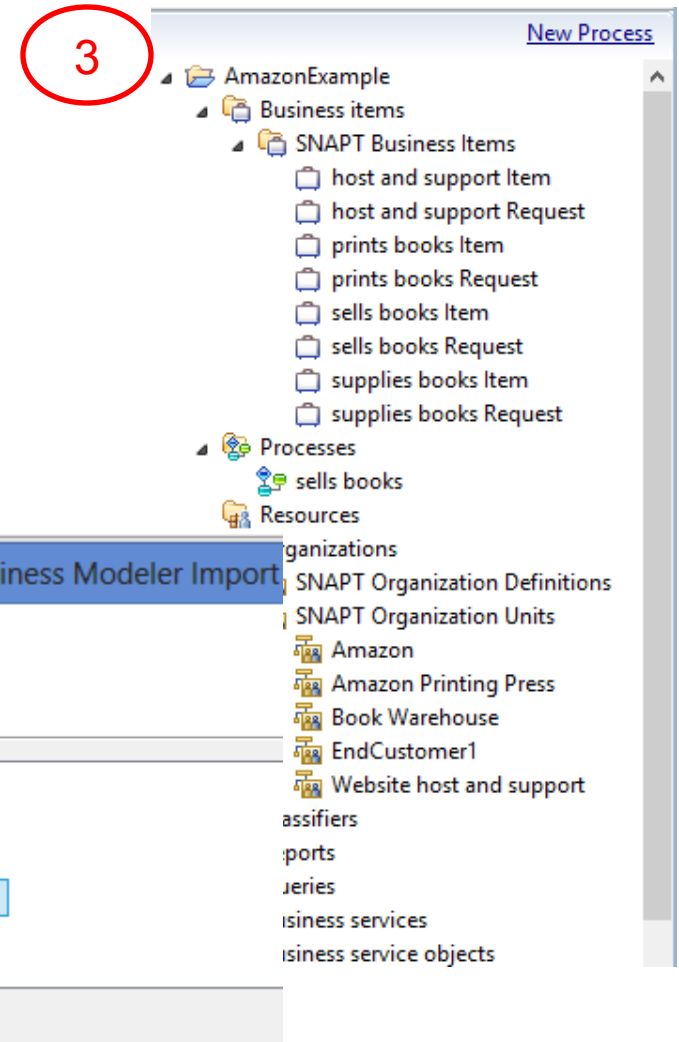
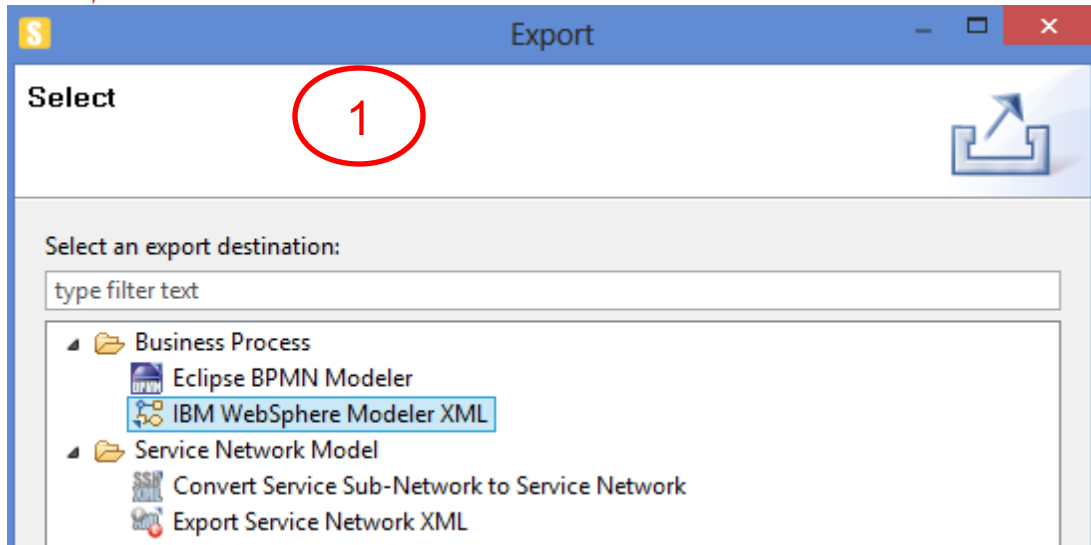
The screenshot shows a software interface with two main panes. The top pane, titled 'Sequencing Information', displays a tree view under 'Service Sell Books'. It shows an 'AND Block' containing two 'Sequential Block' elements, each with a 'Sequence 1' sub-element. A red dashed arrow points from the 'Service Sell Books' title to the 'Sell Books' service in the diagram on the right. The bottom pane, titled 'Properties', shows a table with the following data:

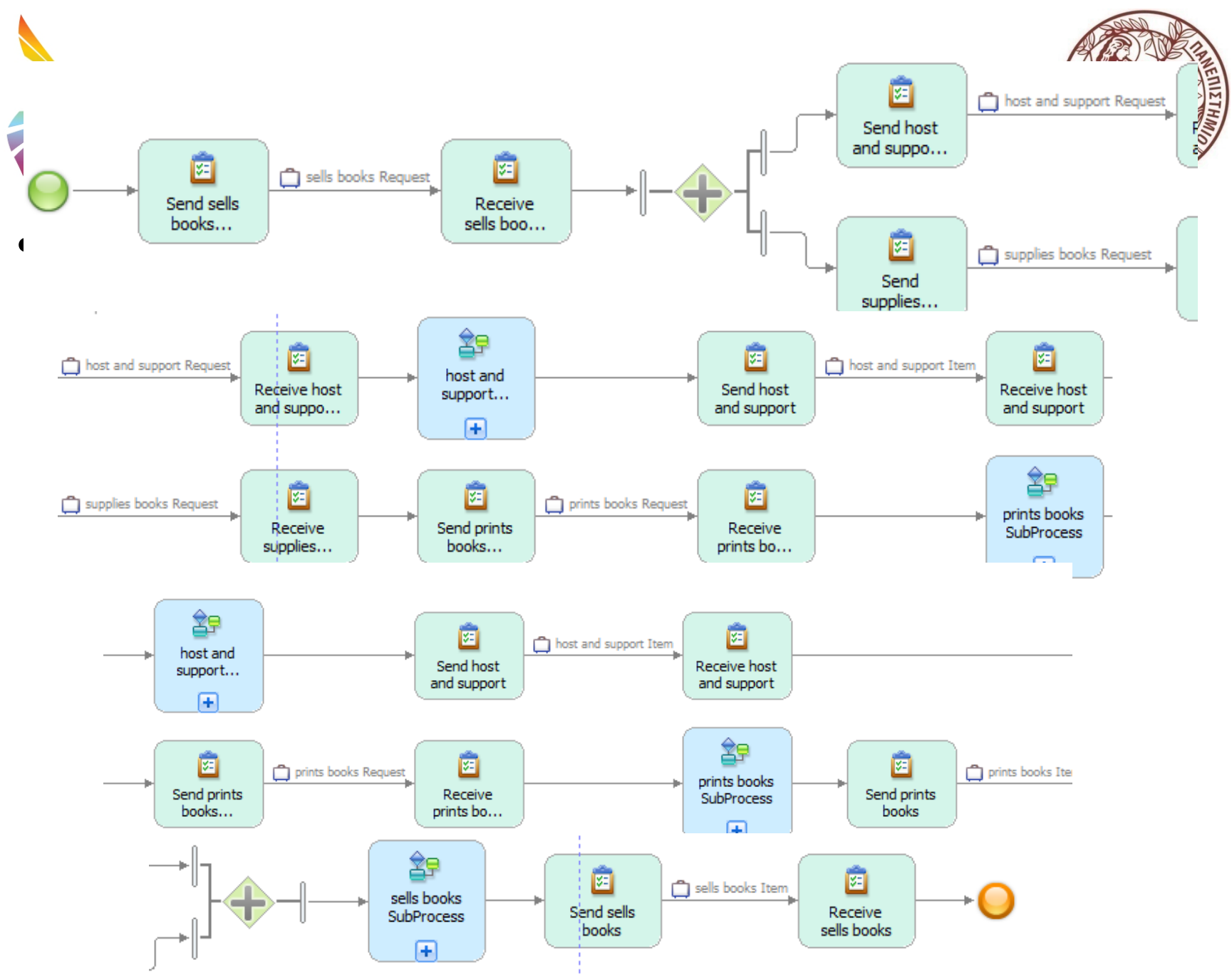
Property	Value
Order	1
Service	Service Supply Books





Example 2 > Exporting and Importing to IBM WBI Modeler







SNAPT Notes and Known Bugs



- If the file extension of your SNAPT diagram is `.sn_diagram` (default), then SNAPT should be able to open it. On the other hand, if you have exported it (as an `.sn` diagram) then you have to import it (not open it).
- Make sure that the name of your SNAPT diagram includes any special characters, such `"#"`, etc.
- **A name (including the space), longer than 31 characters cannot be assigned to participant, sub-network, end customer or enabler.**
- **Some problems may happen due to deletions of edges/entities during the modeling/reconstruction of your service network in SNAPT.**
- **Take backups of your diagrams from time to time.**



References



- *SNAPT User's Manual, Mariana Karmazi, Pantelis Petridis, George Stratakis, Christos Nikolaou*

Τέλος Ενότητας



Ευρωπαϊκή Ένωση
Ευρωπαϊκό Κοινωνικό Ταμείο



Με τη συγχρηματοδότηση της Ελλάδας και της Ευρωπαϊκής Ένωσης



Χρηματοδότηση

- Το παρόν εκπαιδευτικό υλικό έχει αναπτυχθεί στα πλαίσια του εκπαιδευτικού έργου του διδάσκοντα.
- Το έργο «**Ανοικτά Ακαδημαϊκά Μαθήματα στο Πανεπιστήμιο Κρήτης**» έχει χρηματοδοτήσει μόνο τη αναδιαμόρφωση του εκπαιδευτικού υλικού.
- Το έργο υλοποιείται στο πλαίσιο του Επιχειρησιακού Προγράμματος «**Εκπαίδευση και Δια Βίου Μάθηση**» και συγχρηματοδοτείται από την Ευρωπαϊκή Ένωση (Ευρωπαϊκό Κοινωνικό Ταμείο) και από εθνικούς πόρους.



Σημειώματα

Σημείωμα αδειοδότησης

- Το παρόν υλικό διατίθεται με τους όρους της άδειας χρήσης Creative Commons Αναφορά Δημιουργού - Μη Εμπορική Χρήση - Παρόμοια Διανομή 4.0 [1] ή μεταγενέστερη, Διεθνής Έκδοση. Εξαιρούνται τα αυτοτελή έργα τρίτων π.χ. φωτογραφίες, διαγράμματα κ.λ.π., τα οποία εμπεριέχονται σε αυτό και τα οποία αναφέρονται μαζί με τους όρους χρήσης τους στο «Σημείωμα Χρήσης Έργων Τρίτων».



[1] <http://creativecommons.org/licenses/by-nc-nd/4.0/>

•Ως **Μη Εμπορική** ορίζεται η χρήση:

- που δεν περιλαμβάνει άμεσο ή έμμεσο οικονομικό όφελος από την χρήση του έργου, για το διανομέα του έργου και αδειοδόχο
- που δεν περιλαμβάνει οικονομική συναλλαγή ως προϋπόθεση για τη χρήση ή πρόσβαση στο έργο
- που δεν προσπορίζει στο διανομέα του έργου και αδειοδόχο έμμεσο οικονομικό όφελος (π.χ. διαφημίσεις) από την προβολή του έργου σε διαδικτυακό τόπο

•Ο δικαιούχος μπορεί να παρέχει στον αδειοδόχο ξεχωριστή άδεια να χρησιμοποιεί το έργο για εμπορική χρήση, εφόσον αυτό του ζητηθεί.

Σημείωμα Αναφοράς

Copyright Πανεπιστήμιο Κρήτης, Μύρων Παπαδάκης. «**Εισαγωγή στα Δίκτυα Υπηρεσιών. Διάλεξη 4η: Assisting Lecture 1- SNAPT**». Έκδοση: 1.0.
Ηράκλειο/Ρέθυμνο 2015. Διαθέσιμο από τη δικτυακή διεύθυνση:
<https://elearn.uoc.gr/course/view.php?id=416/>